

## Legal Information

©2023 Hangzhou Hikvision Digital Technology Co., Ltd. All rights reserved.

### About this Manual

The Manual includes instructions for using and managing the Product. Pictures, charts, images and all other information hereinafter are for description and explanation only. The information contained in the Manual is subject to change, without notice, due to firmware updates or other reasons. Please find the latest version of this Manual at the Hikvision website (<https://www.hikvision.com/>). Please use this Manual with the guidance and assistance of professionals trained in supporting the Product.

### Trademarks

**HIKVISION** and other Hikvision's trademarks and logos are the properties of Hikvision in various jurisdictions. Other trademarks and logos mentioned are the properties of their respective owners.

### Disclaimer

TO THE MAXIMUM EXTENT PERMITTED BY APPLICABLE LAW, THIS MANUAL AND THE PRODUCT DESCRIBED, WITH ITS HARDWARE, SOFTWARE AND FIRMWARE, ARE PROVIDED "AS IS" AND "WITH ALL FAULTS AND ERRORS". HIKVISION MAKES NO WARRANTIES, EXPRESS OR IMPLIED, INCLUDING WITHOUT LIMITATION, MERCHANTABILITY, SATISFACTORY QUALITY, OR FITNESS FOR A PARTICULAR PURPOSE. THE USE OF THE PRODUCT BY YOU IS AT YOUR OWN RISK. IN NO EVENT WILL HIKVISION BE LIABLE TO YOU FOR ANY SPECIAL, CONSEQUENTIAL, INCIDENTAL, OR INDIRECT DAMAGES, INCLUDING, AMONG OTHERS, DAMAGES FOR LOSS OF BUSINESS PROFITS, BUSINESS INTERRUPTION, OR LOSS OF DATA, CORRUPTION OF SYSTEMS, OR LOSS OF DOCUMENTATION, WHETHER BASED ON BREACH OF CONTRACT, TORT (INCLUDING NEGLIGENCE), PRODUCT LIABILITY, OR OTHERWISE, IN CONNECTION WITH THE USE OF THE PRODUCT, EVEN IF HIKVISION HAS BEEN ADVISED OF THE POSSIBILITY OF SUCH DAMAGES OR LOSS. YOU ACKNOWLEDGE THAT THE NATURE OF THE INTERNET PROVIDES FOR INHERENT SECURITY RISKS, AND HIKVISION SHALL NOT TAKE ANY RESPONSIBILITIES FOR ABNORMAL OPERATION, PRIVACY LEAKAGE OR OTHER DAMAGES RESULTING FROM CYBER-ATTACK, HACKER ATTACK, VIRUS INFECTION, OR OTHER INTERNET SECURITY RISKS; HOWEVER, HIKVISION WILL PROVIDE TIMELY TECHNICAL SUPPORT IF REQUIRED. YOU AGREE TO USE THIS PRODUCT IN COMPLIANCE WITH ALL APPLICABLE LAWS, AND YOU ARE SOLELY RESPONSIBLE FOR ENSURING THAT YOUR USE CONFORMS TO THE APPLICABLE LAW. ESPECIALLY, YOU ARE RESPONSIBLE, FOR USING THIS PRODUCT IN A MANNER THAT DOES NOT INFRINGE ON THE RIGHTS OF THIRD PARTIES, INCLUDING WITHOUT LIMITATION, RIGHTS OF PUBLICITY, INTELLECTUAL PROPERTY RIGHTS, OR DATA PROTECTION AND OTHER PRIVACY RIGHTS. YOU SHALL NOT USE THIS PRODUCT FOR ANY PROHIBITED END-USES, INCLUDING THE DEVELOPMENT OR PRODUCTION OF WEAPONS OF MASS DESTRUCTION, THE DEVELOPMENT OR PRODUCTION OF CHEMICAL OR BIOLOGICAL WEAPONS, ANY ACTIVITIES IN THE CONTEXT RELATED TO ANY NUCLEAR EXPLOSIVE OR UNSAFE NUCLEAR FUEL-CYCLE, OR IN SUPPORT OF HUMAN RIGHTS ABUSES. IN THE EVENT OF ANY CONFLICTS BETWEEN THIS MANUAL AND THE APPLICABLE LAW, THE LATTER PREVAILS.



## Analog Ceiling Speaker

### Quick Start Guide

1

### 1. Safety precautions

- Please read safety operation instruction carefully before installing or using this device.
- Please follow warning and relative safety points.
- Please keep this owner manual for your convenience whenever you need it in the future after reading.

#### Warning



This symbol is to remind end user that the enclosed file includes important statement for operation and maintenance.

#### When set up or install this product

##### • Avoid getting wet with water

Please don't expose product under rain or environment probably stained by other liquid, or else it may catch fire.

##### • Please don't use power voltage above specified

It may catch fire when using power voltage above specified.

#### When use the product

##### • Once an abnormality occurs

During use of product, please cut off power supply when following abnormality occur, please contact our dealers. a fire may be caught or electric shock may happen when continue using product.

- Product smokes or gives strange smell.
- Product inside is invaded by water or foreign objects.
- Product drops, or product case damages.
- Power cord damages(cord cord wire exposes or broken).
- Malfunction of product(for example can't be accessible or no sound).
- Please don't open product inside or try to repair.

##### • Please avoid foreign objects invading product inside

Please avoid metal or inflammable objects inserting to product venting area or invading product inside, Or else a fire may be caught or electric shock may happen.

##### • Please don't touch when thundering

In order not to be shocked, please don't touch product and connector while thundering.

##### • Please don't place containers with liquid or small metal objects above product

It may catch fire when liquid from container get into product when container is overturned.

2

### • Please open product inside or try to modify product

There are high voltage components inside product, when open the product case or try to modify product, it may catch a fire or cause electric shock, all the repairs or modifications must be done by professionals.

### • Attentions when maintaining product or product is not in use for a long time

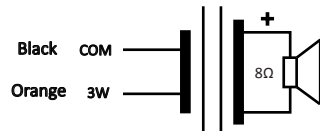
During product maintaining or product is not in use for 10 days or longer, to insure safety, please disconnect power and pull out the plug. If this is not followed, it may cause an electric shock or catch a fire.

### 2. Overview

(1) This ceiling speaker is built with compound paper and fiberglass cone, the cone is treated with damping glue, on the double radiused surround, this technique can not only improve the dip of middle range of frequency response.

(2) The connectors on in-ceiling speaker can be connected with output of amplifier up to 100V.

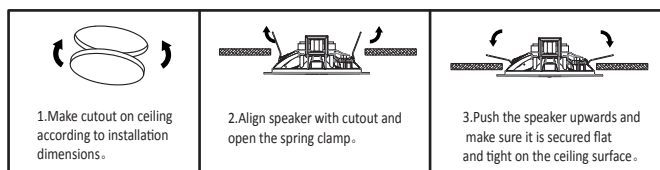
### 3. Schematic Diagram



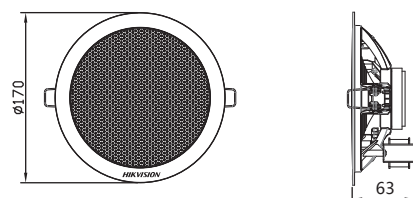
#### Schematic Diagram:

The Input COM on amplifier shall be connected with black wire on speaker connector, The fixed output of 100V on amplifier shall be connected with orange wire on speaker connector.

### 4. Installation Guidance



### 5. Products Overall Dimension



3

### 6. Specification, functional parts and parameters

Electrical	Speaker part	5.25" paper cone speaker
	Maximum power	5W
	Rated power(PHC)	3W
	Sensitivity (1KHz,1m)	91dB ± 3dB
	Effective frequency response(-10dB)	90-20kHz
	Rated voltage	100V
	Input type	Connectors
Finished Product	Connector's color	White Nylon
	Product Dimension	Φ170 × 63 mm
	Cutout Dimension	φ148 mm
	Product net weight	0.50kg
	Installation Type	Ceiling installation
Material	Case	White ABS
	Grille	White painted steel
Environment	Working Temperature	-20 °C ~ +50 °C
	Storage Temperature	-25 °C ~ +55 °C
	Relative Temperature	< 95%

### 7. Parts List

Item	Part Name	Specification	Quantity	Unit	Remarks
1	Ceiling Speaker	DS-QAE0203G1E-V	1	pc	
2	Owner Manual		1	set	

4

